

American Plaice

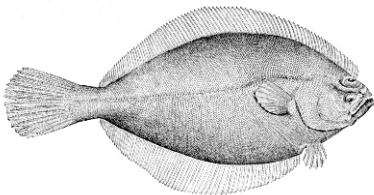
Hippoglossoides platessoides



© ANDRÉ-PHILIPPE PICARD

Species Description

The American Plaice is a flat right-eye flounder, up to 60 cm long, with a small head. On its right side ("eyed side") it is an even red or grey-brown colour and its left side ("blind side") it is white. Its mouth is large, with its jawbone extending to below the middle of the eye. It has small pectoral and pelvic fins and a rounded convex tail (caudal fin). Its white-tipped dorsal fin (76-101 rays) and anal fins (60-79 rays), extend along the back and belly. It has a line extending down its side (lateral line).

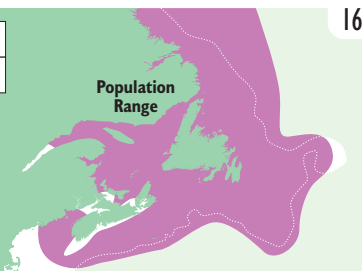


© B. GOODE & T. H. BEAN

Key ID Features: * rounded caudal fin * almost straight lateral line * reddish-brown body

STATUS 	Threatened	COSEWIC
	Not Listed	SARA

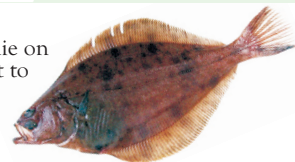
Found on both sides of the North Atlantic Ocean on the continental shelves. It is found throughout the waters off Nova Scotia. This species has declined by 86% in the Gulf of St. Lawrence, and 67% on the Scotian Shelf, Bay of Fundy and Georges Bank.



Population Range

Interesting Points

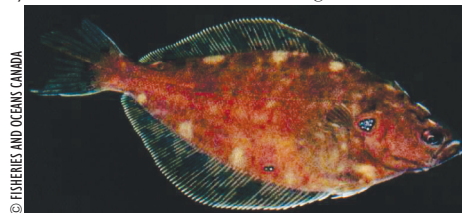
- Has both eyes on the right so it can lie on its left and burrow into the sediment to escape predators and ambush prey.
- Was likely once the most abundant flatfish in the northwest Atlantic.



© HUGUES BENOIT

Threats

- Overfishing. Targeted by directed fisheries and also caught and discarded as bycatch in commercial fisheries targeting other species (cod, redfish, and other flounders).
- Increased natural mortality may also slow recovery.



© FISHERIES AND OCEANS CANADA

Learn how you can help on page 136.

Contacts, Information & Stewardship Opportunities

Contact: DFO Species at Risk 1-866-891-0771 or xmarsara@mar.dfo-mpo.gc.ca

Info: www.dfo-mpo.gc.ca/species-especes, www.sararegistry.gc.ca

Stewardship: Marine Stewardship Council: www.msc.org